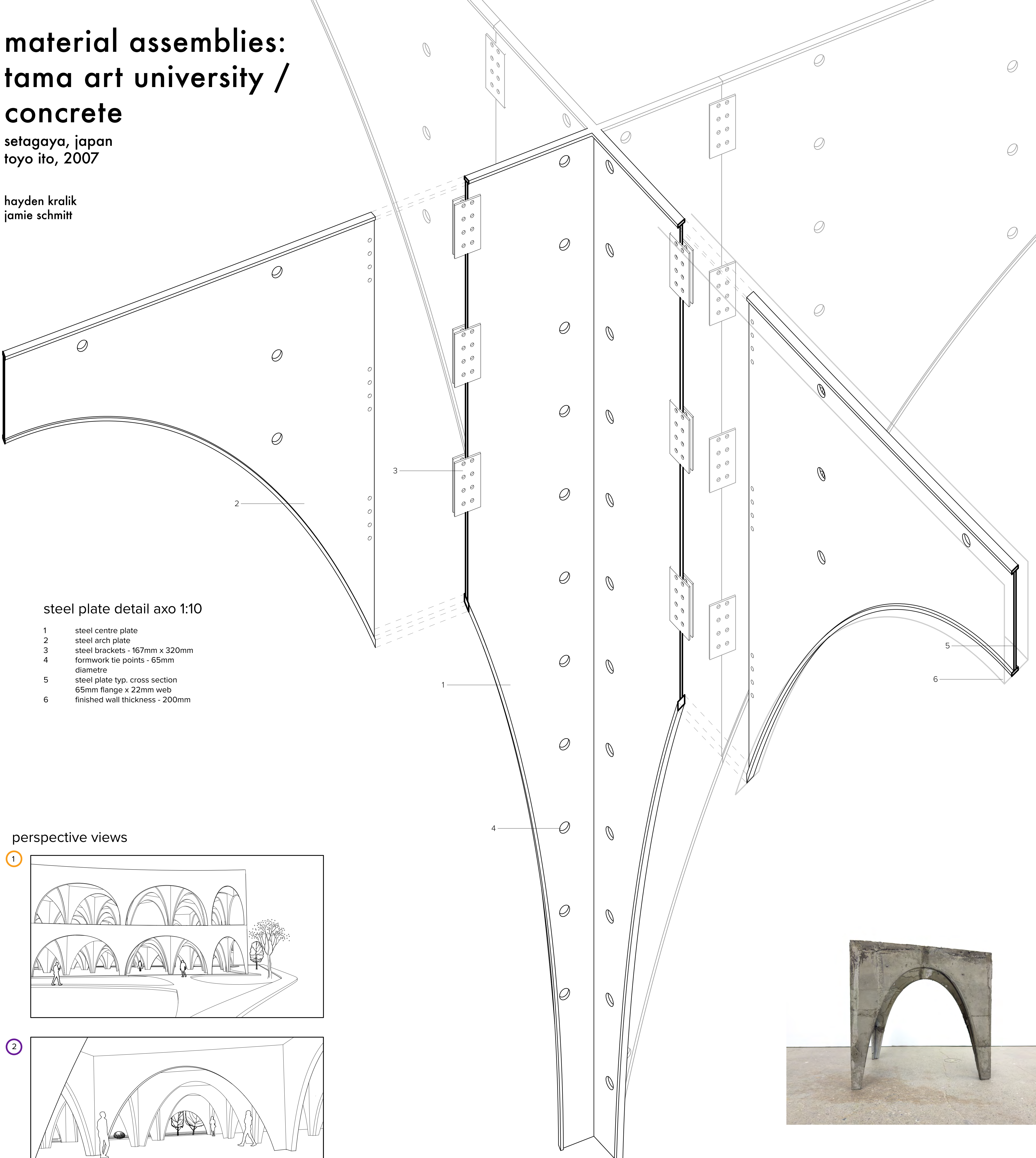


material assemblies: tama art university / concrete

setagaya, japan
toyo ito, 2007

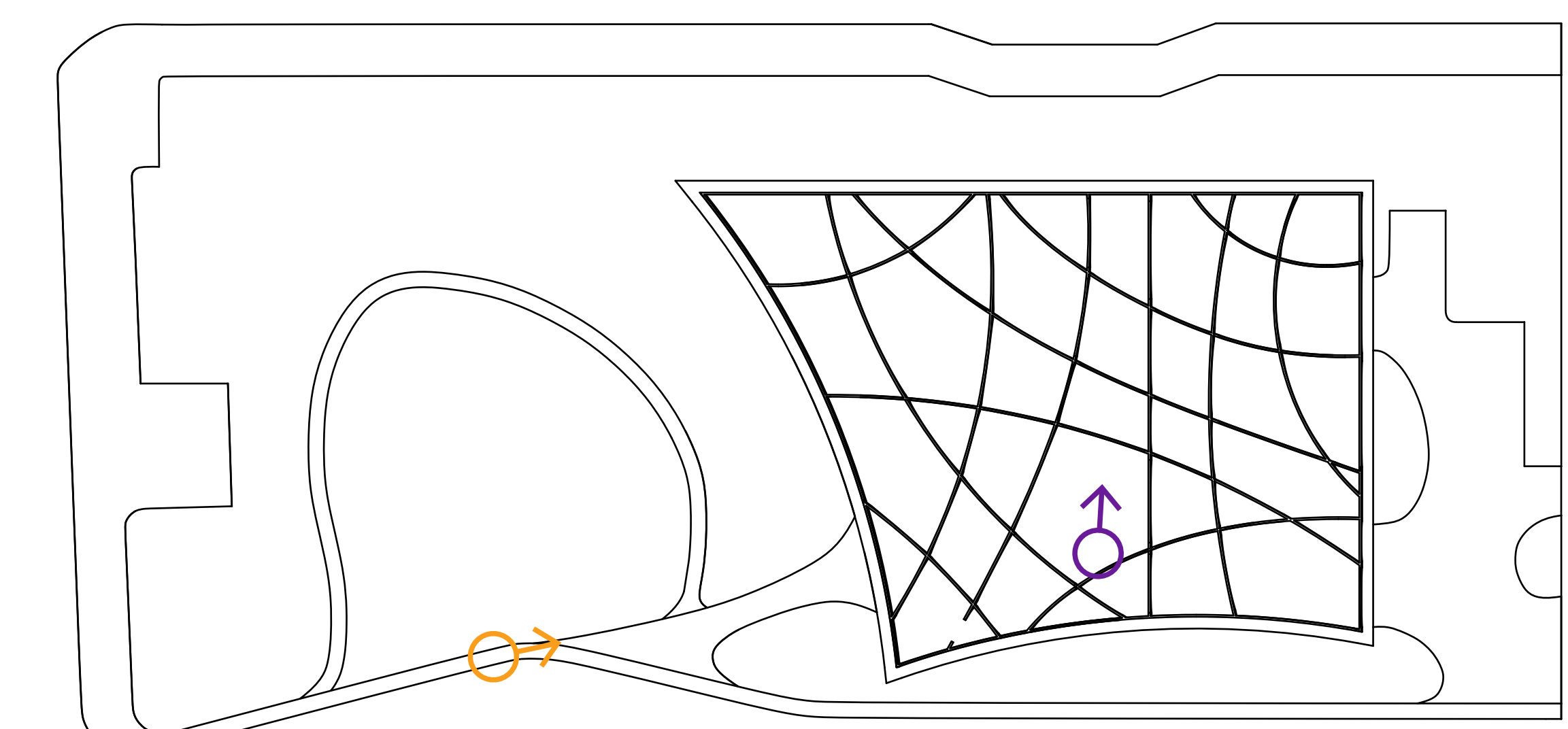
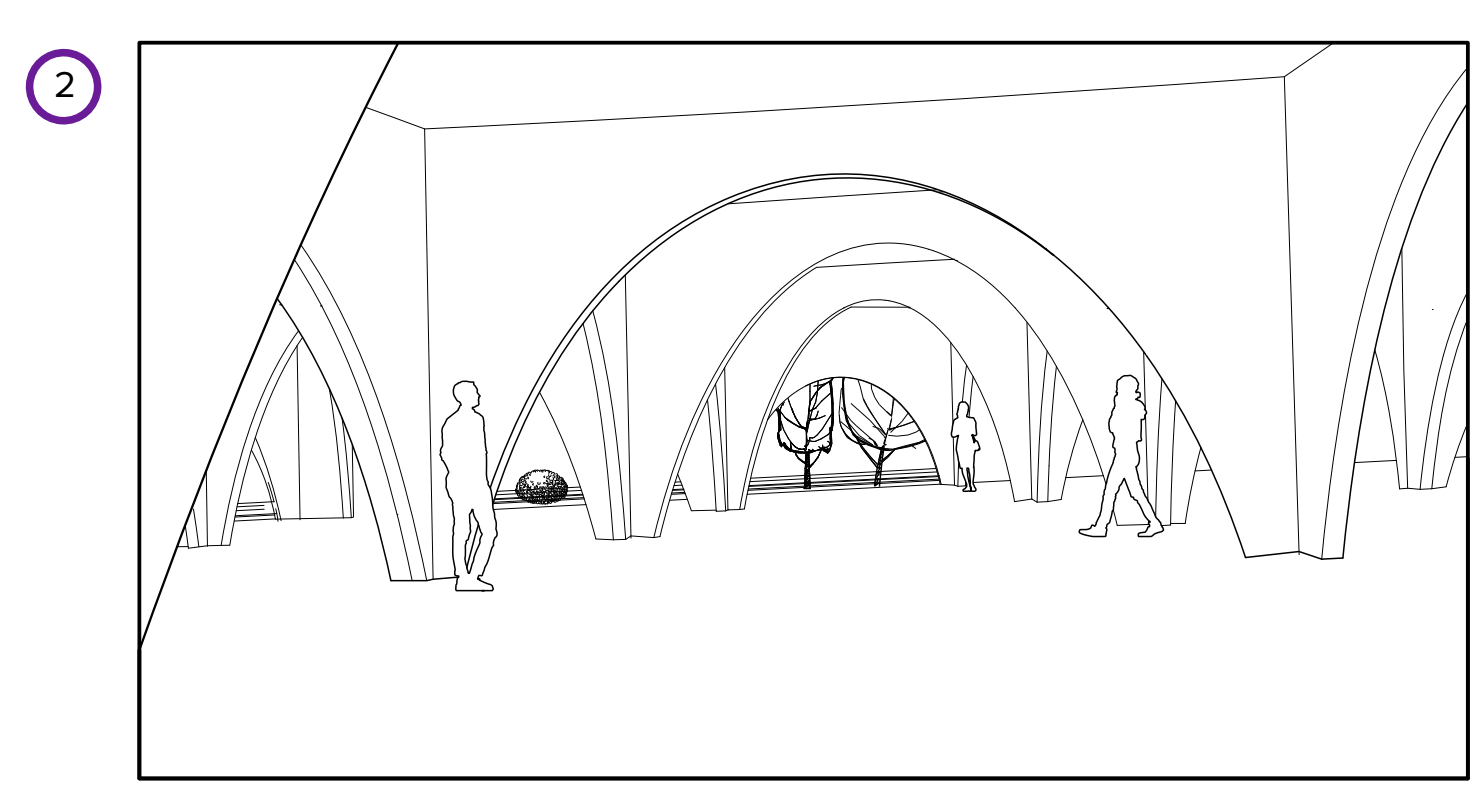
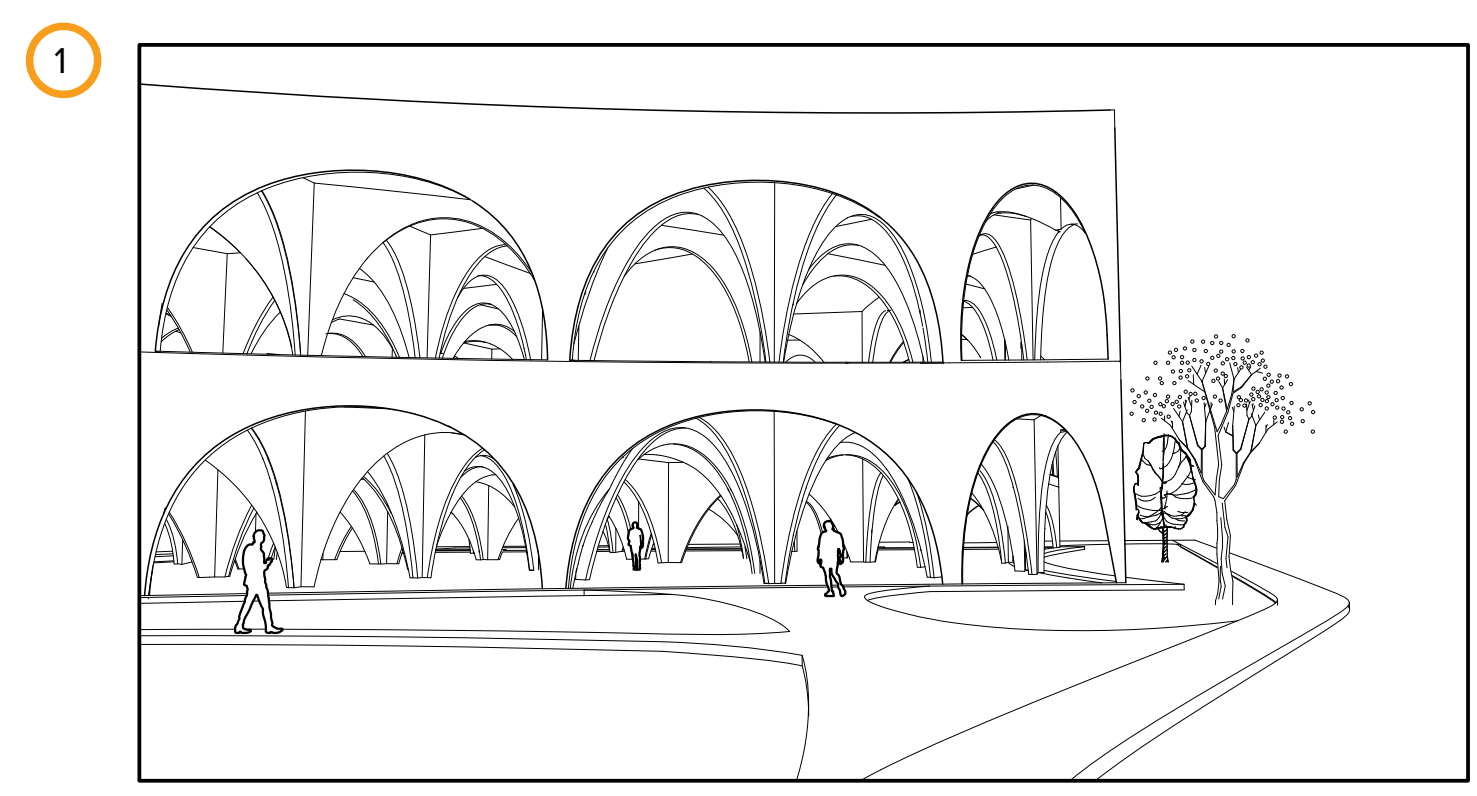
hayden kralik
jamie schmitt



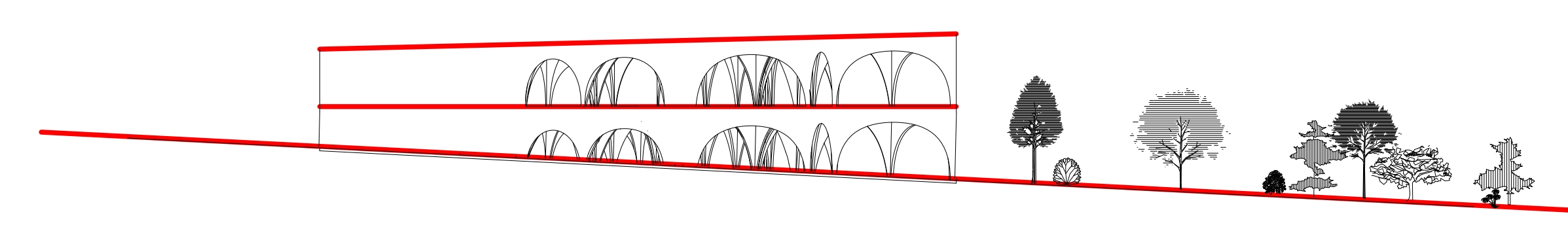
steel plate detail axo 1:10

- 1 steel centre plate
- 2 steel arch plate
- 3 steel brackets - 167mm x 320mm
- 4 formwork tie points - 65mm diameter
- 5 steel plate typ. cross section 65mm flange x 22mm web
- 6 finished wall thickness - 200mm

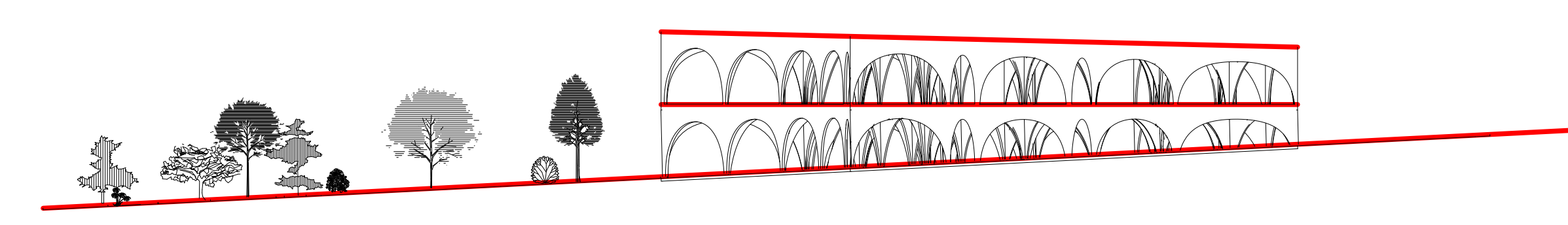
perspective views



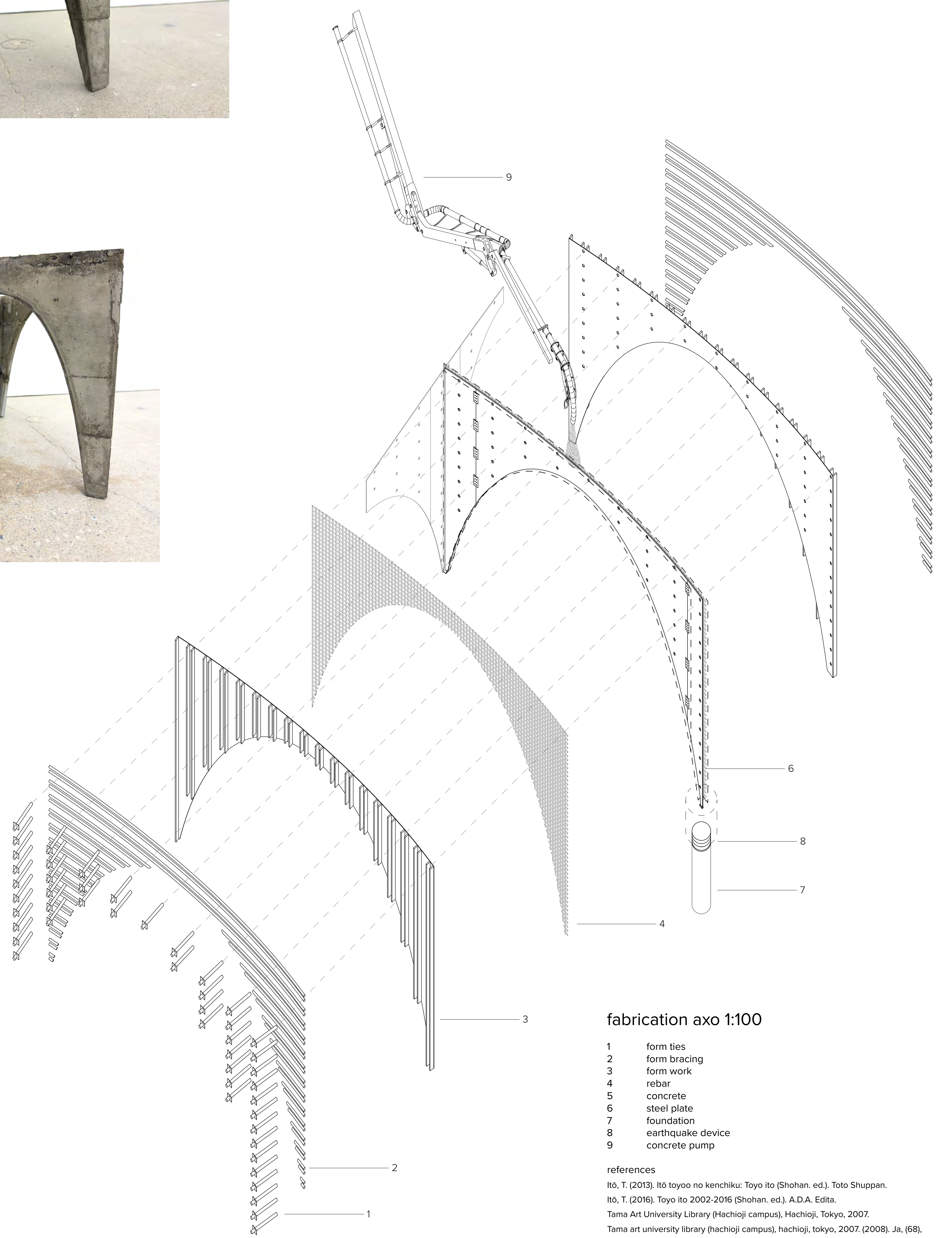
site plan 1:500



slope east elevation 1:500



slope west elevation 1:500

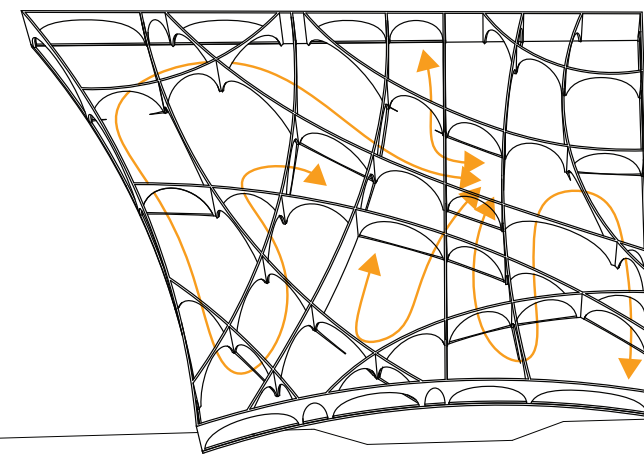
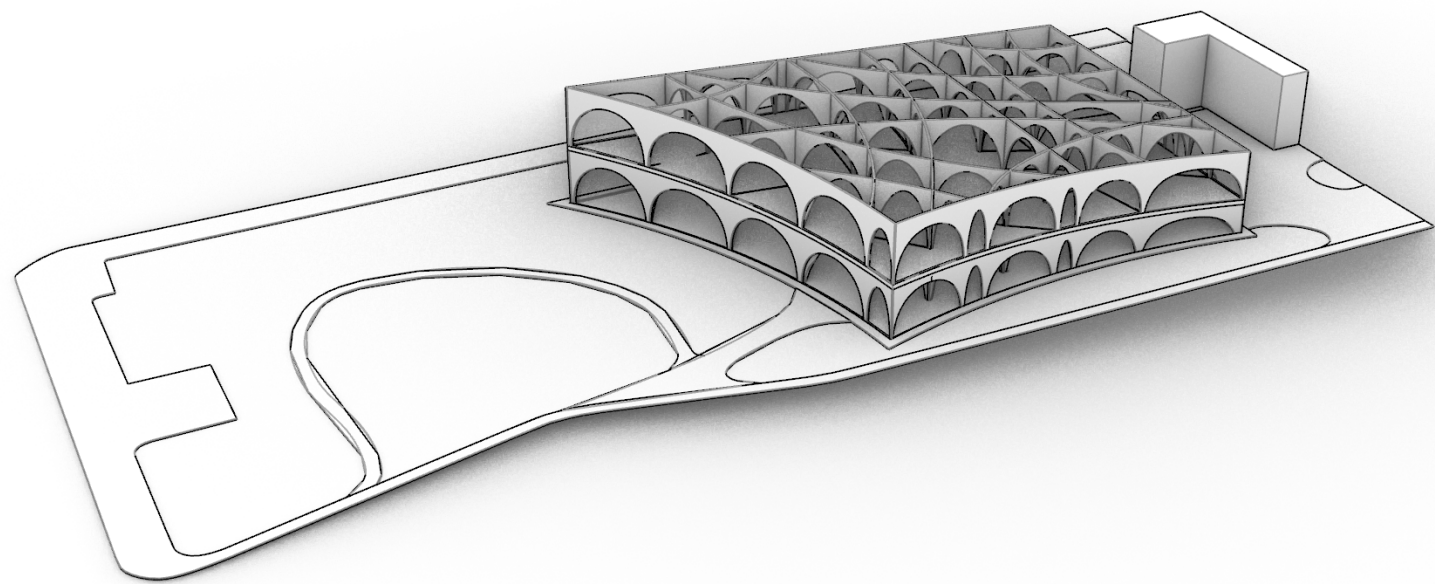
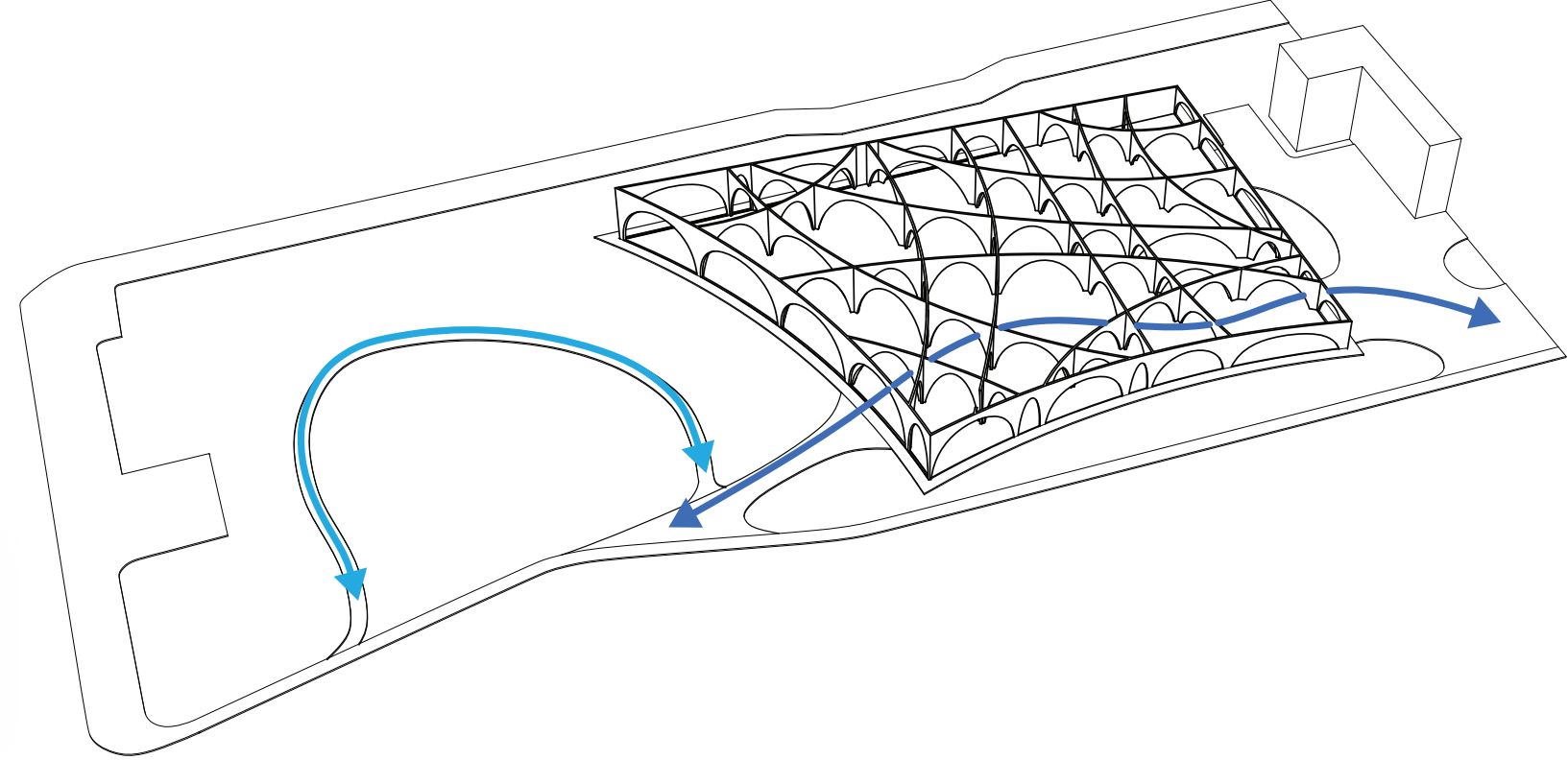
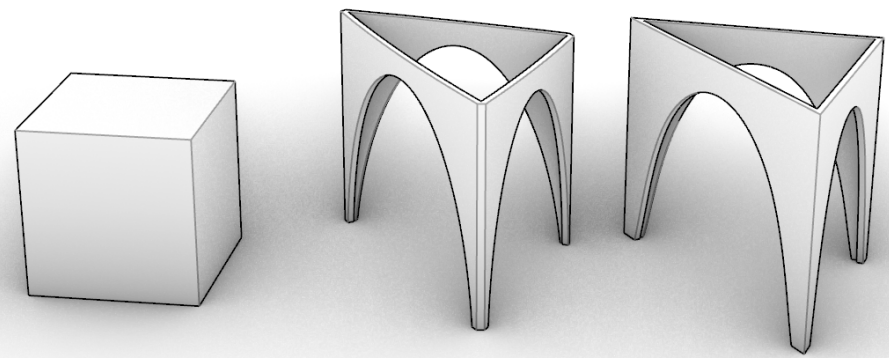


fabrication axo 1:100

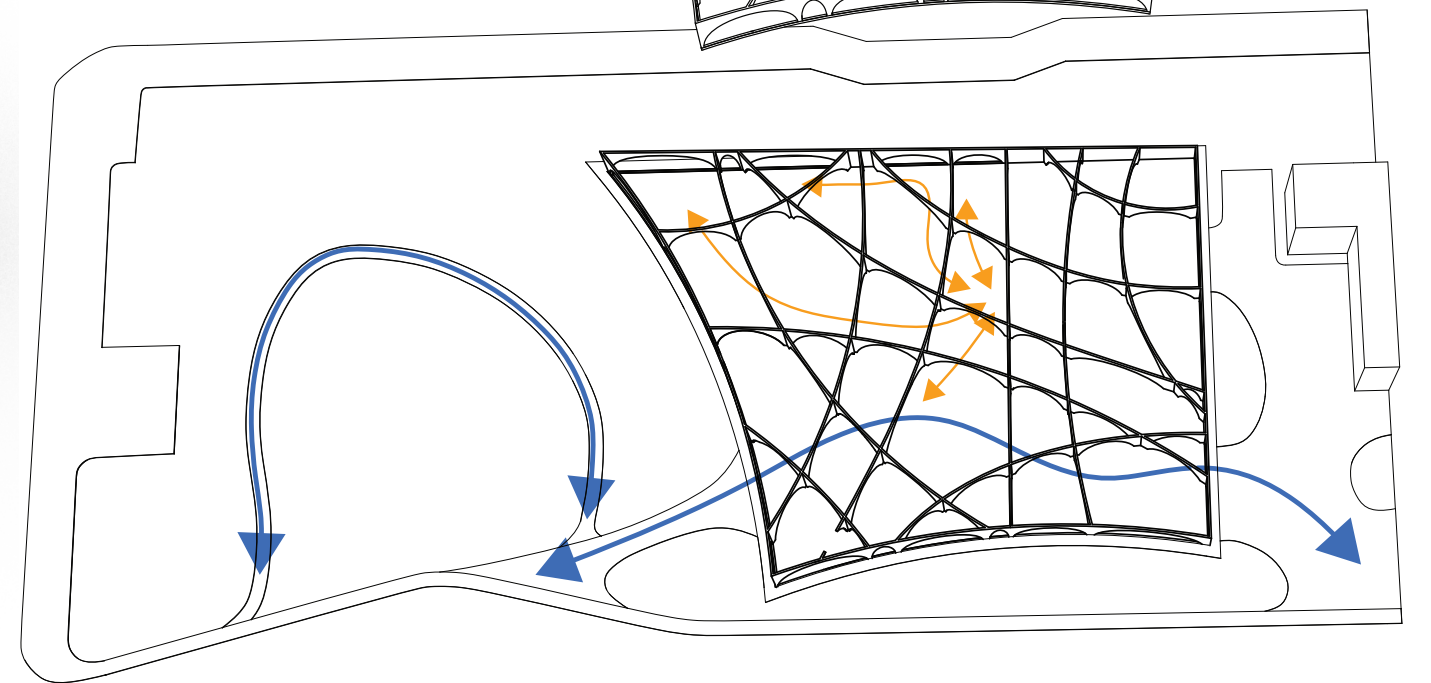
- 1 form ties
- 2 form bracing
- 3 form work
- 4 rebar
- 5 concrete
- 6 steel plate
- 7 foundation
- 8 earthquake device
- 9 concrete pump

references
 Itô, T. (2013). Itô toyo no kenchiku. Toyo Ito (Shohan, ed.), Toto Shuppan.
 Itô, T. (2016). Toyo Ito 2002-2016 (Shohan, ed.), A.D.A. Edita.
 Tama Art University Library (Hachioji campus), Hachioji, Tokyo, 2007.
 Tama art university library (hachioji campus), hachioji, tokyo, 2007. (2008). Ja, (68), 84-85.
 The japan architect. (1959). The Japan Architect.
 Turnbull, J. (2012). Toyo Ito: Forces of nature (1st ed.), Princeton Architectural Press.

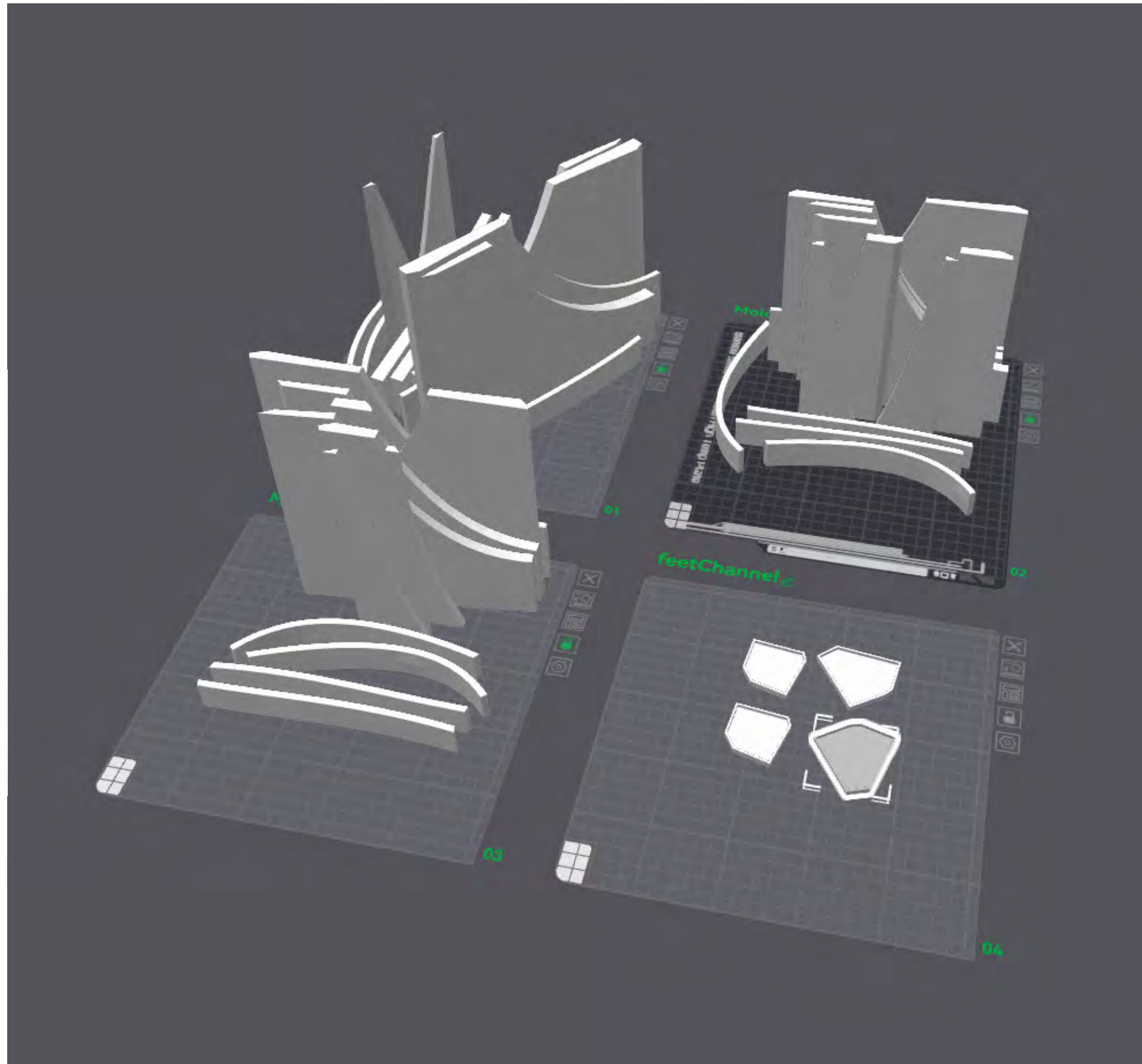
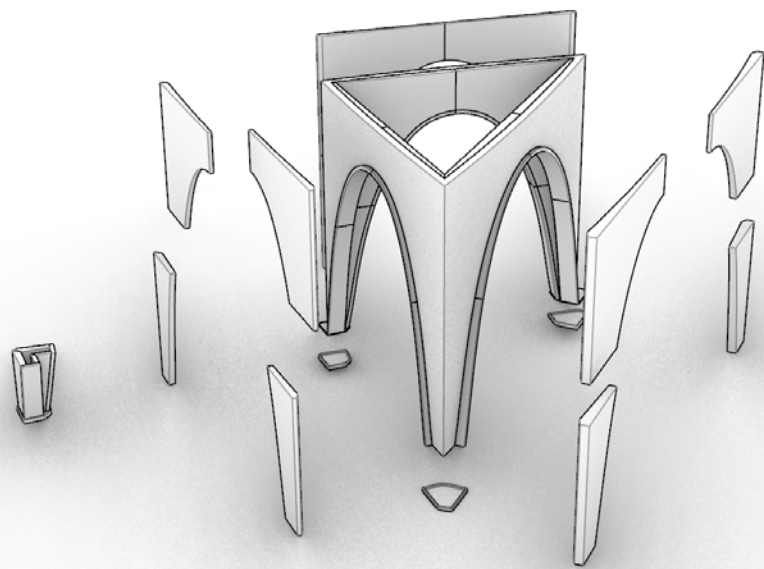
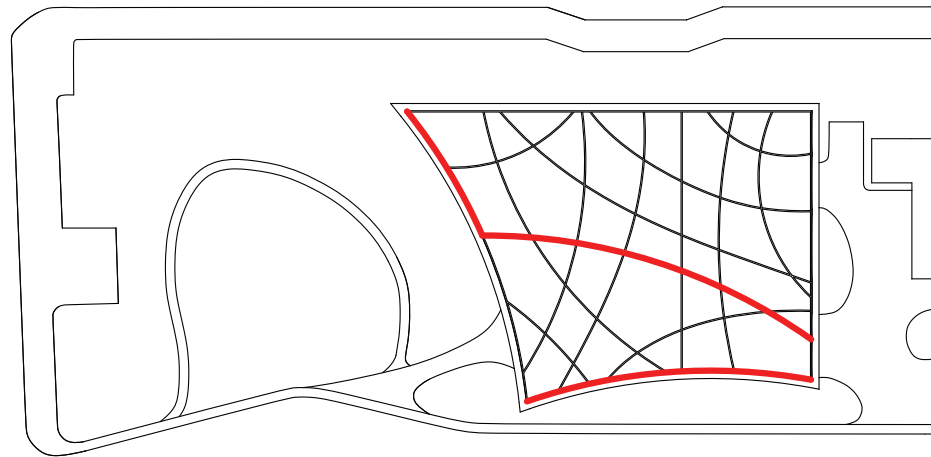
Process Work

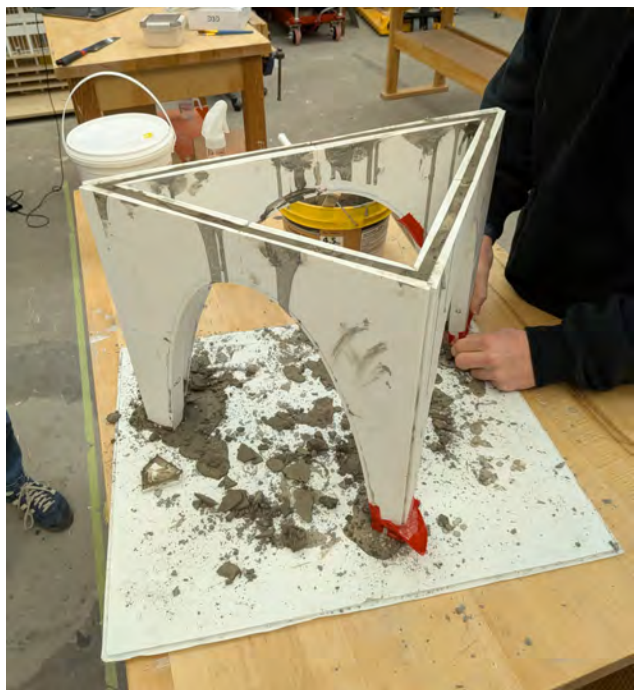
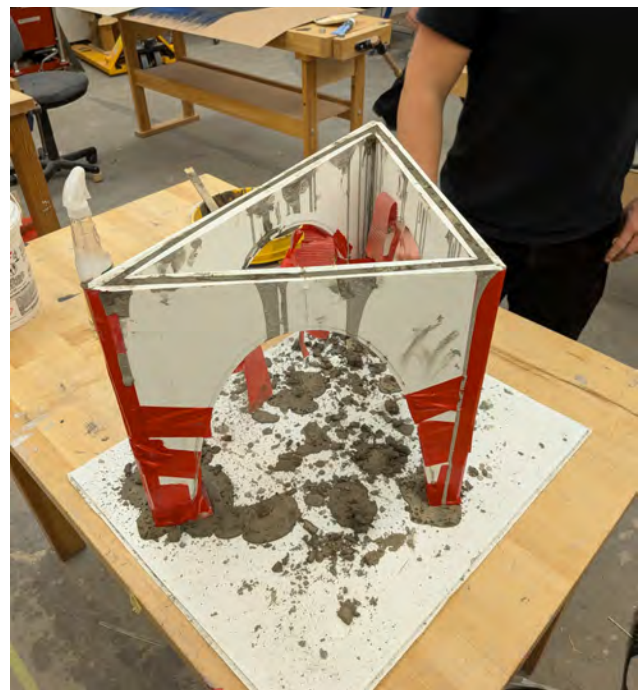
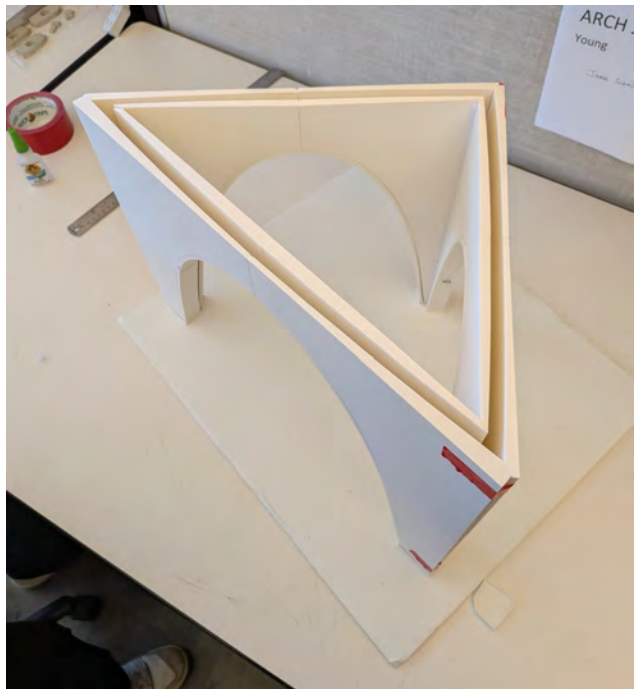
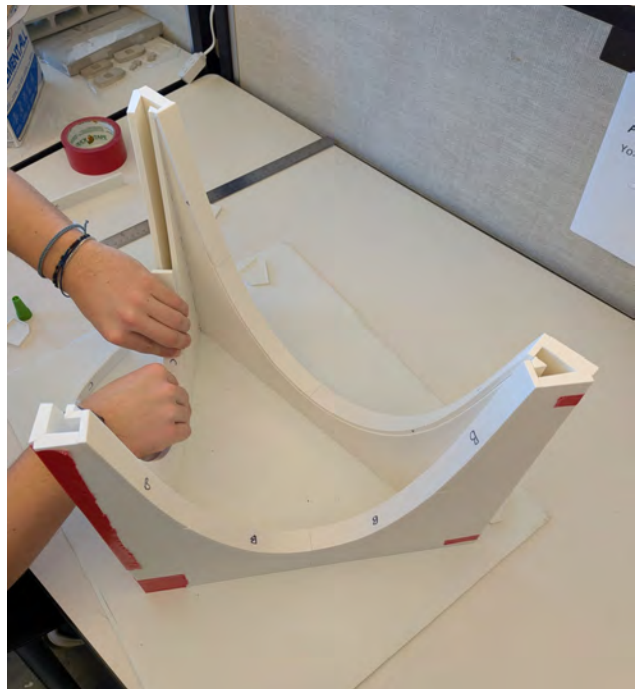
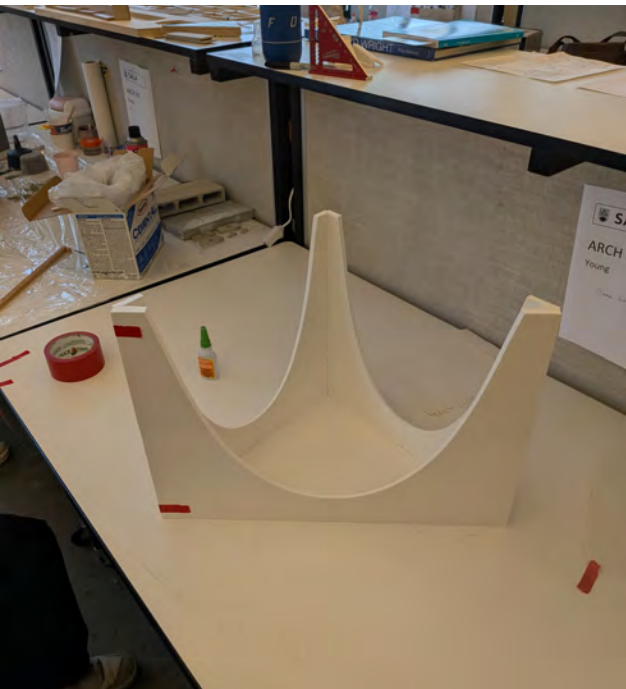
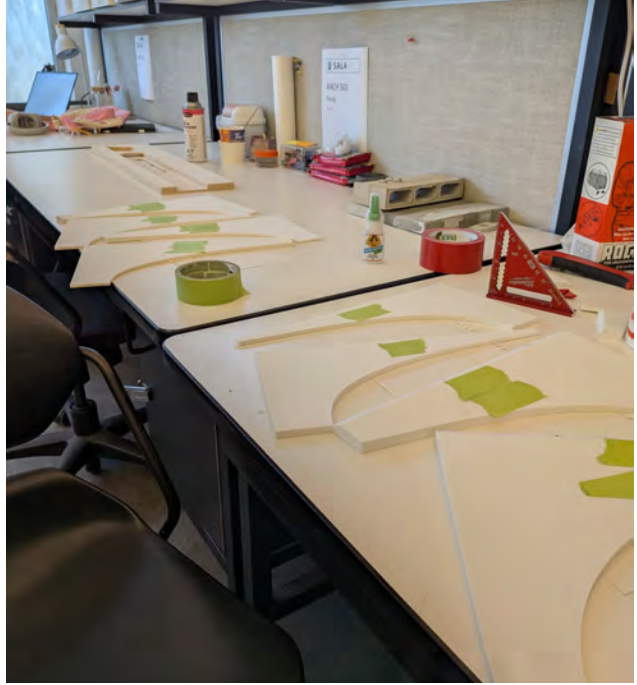


2F



1F



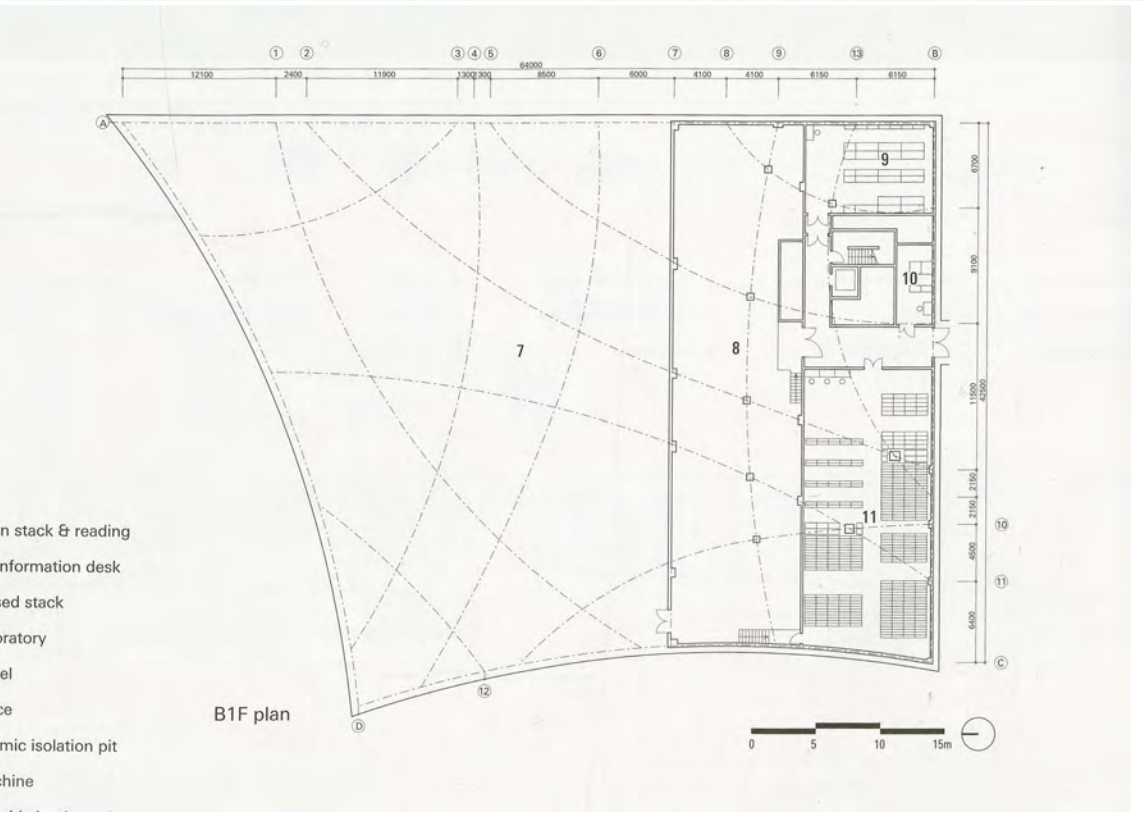


Research



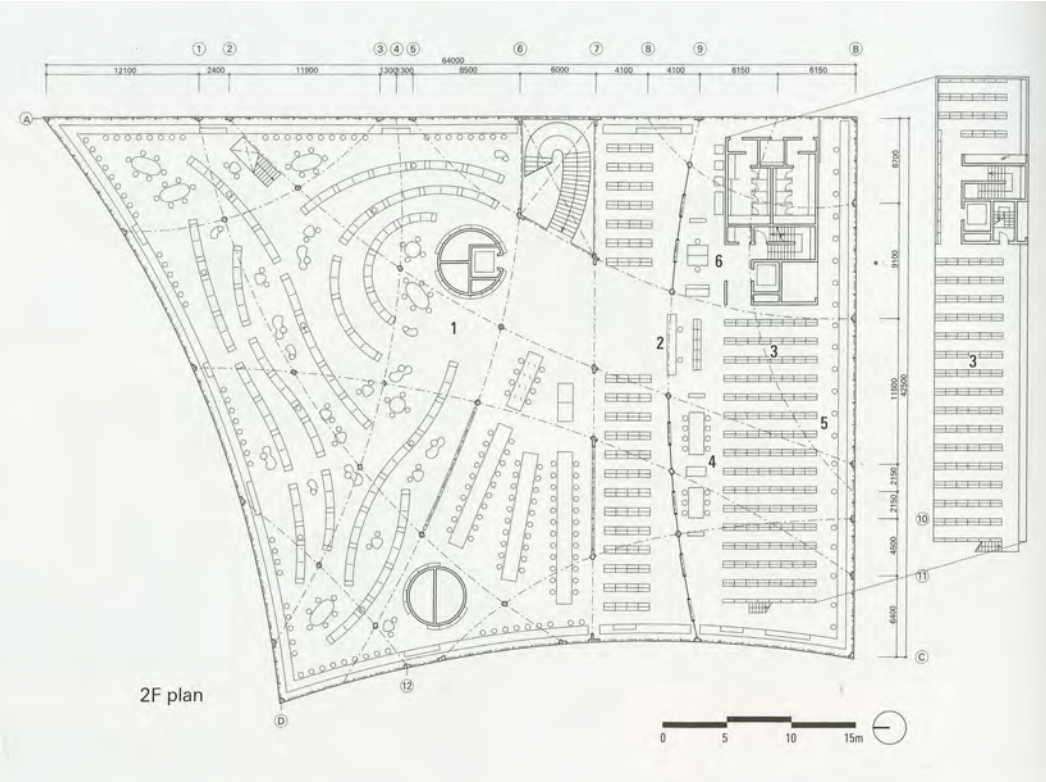
1F plan

- | | | | | |
|------------------|---------------------|------------------------|---------------|--------------------|
| 1 north entrance | 4 temporary theatre | 7 1F information desk | 10 lounge | 13 office |
| 2 south entrance | 5 cafe | 8 new arrival magazine | 11 av booth | 14 office entrance |
| 3 arcade gallery | 6 library entrance | 9 multimedia | 12 laboratory | |

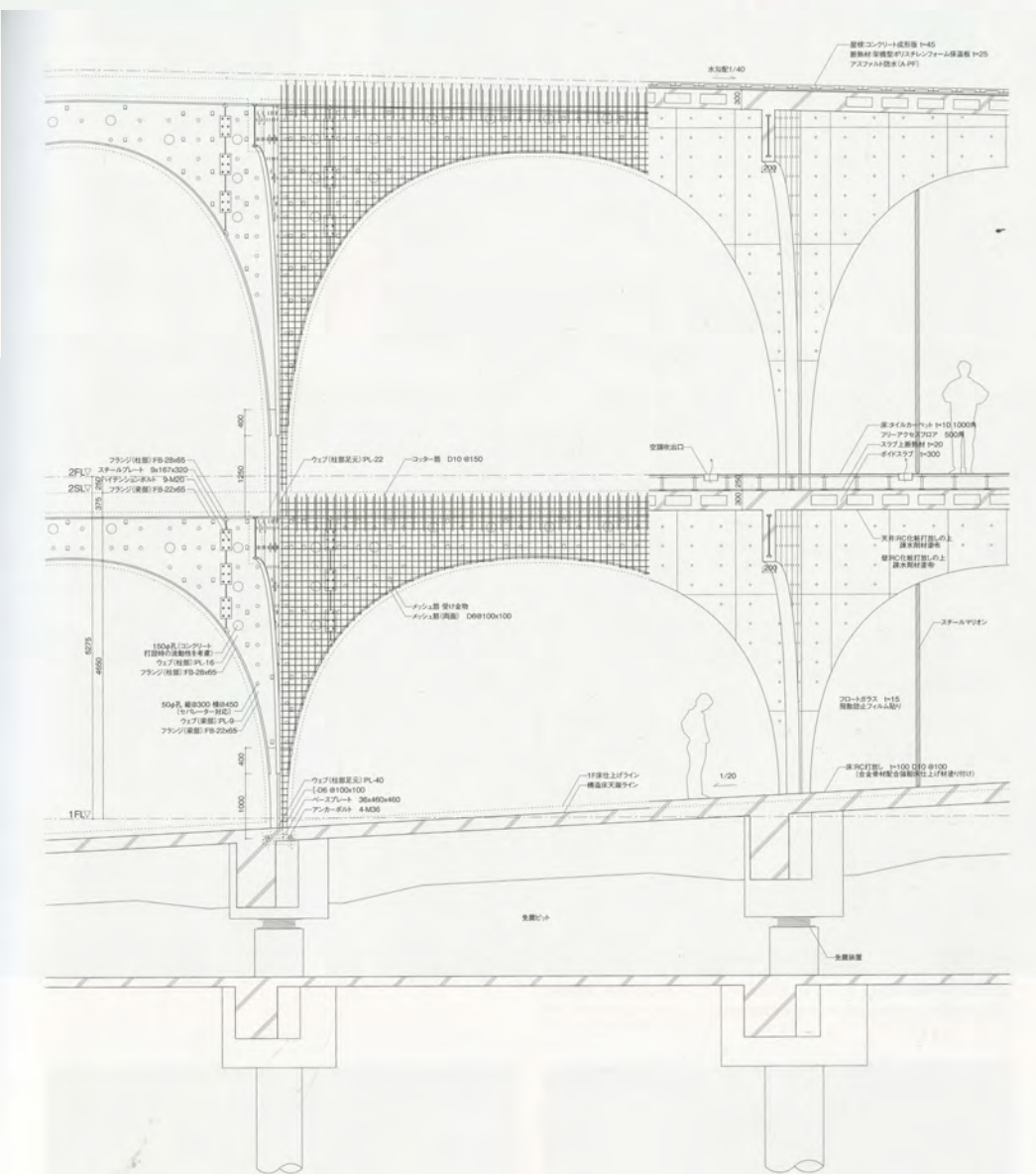


B1F plan

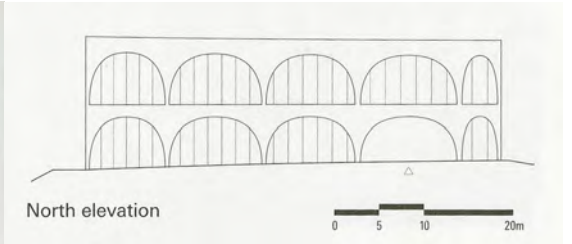
- pen stack & reading
- Information desk
- closed stack
- laboratory
- barrel
- office
- seismic isolation pit
- machine



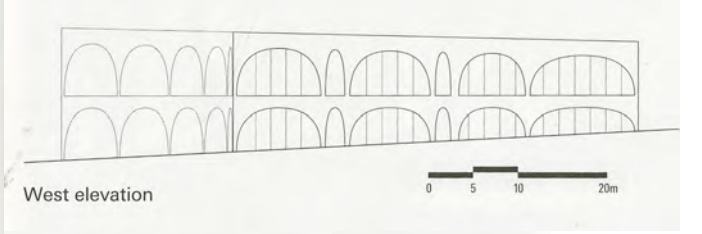
2F plan



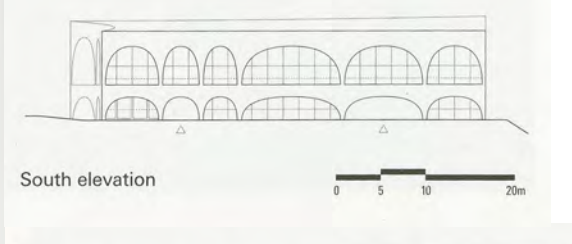
Detail of Construction Wall



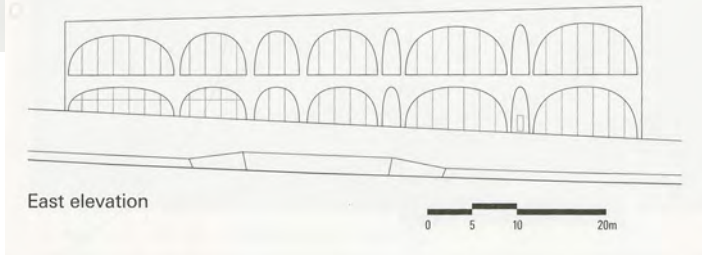
North elevation



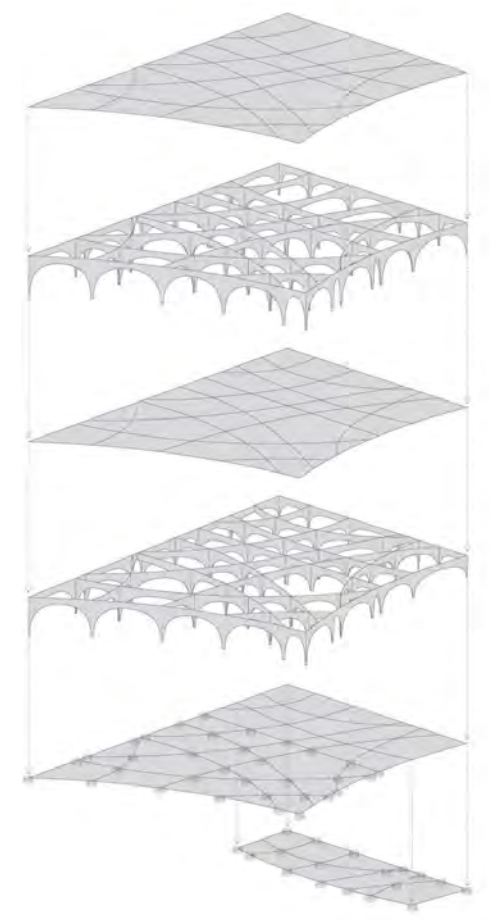
West elevation



South elevation



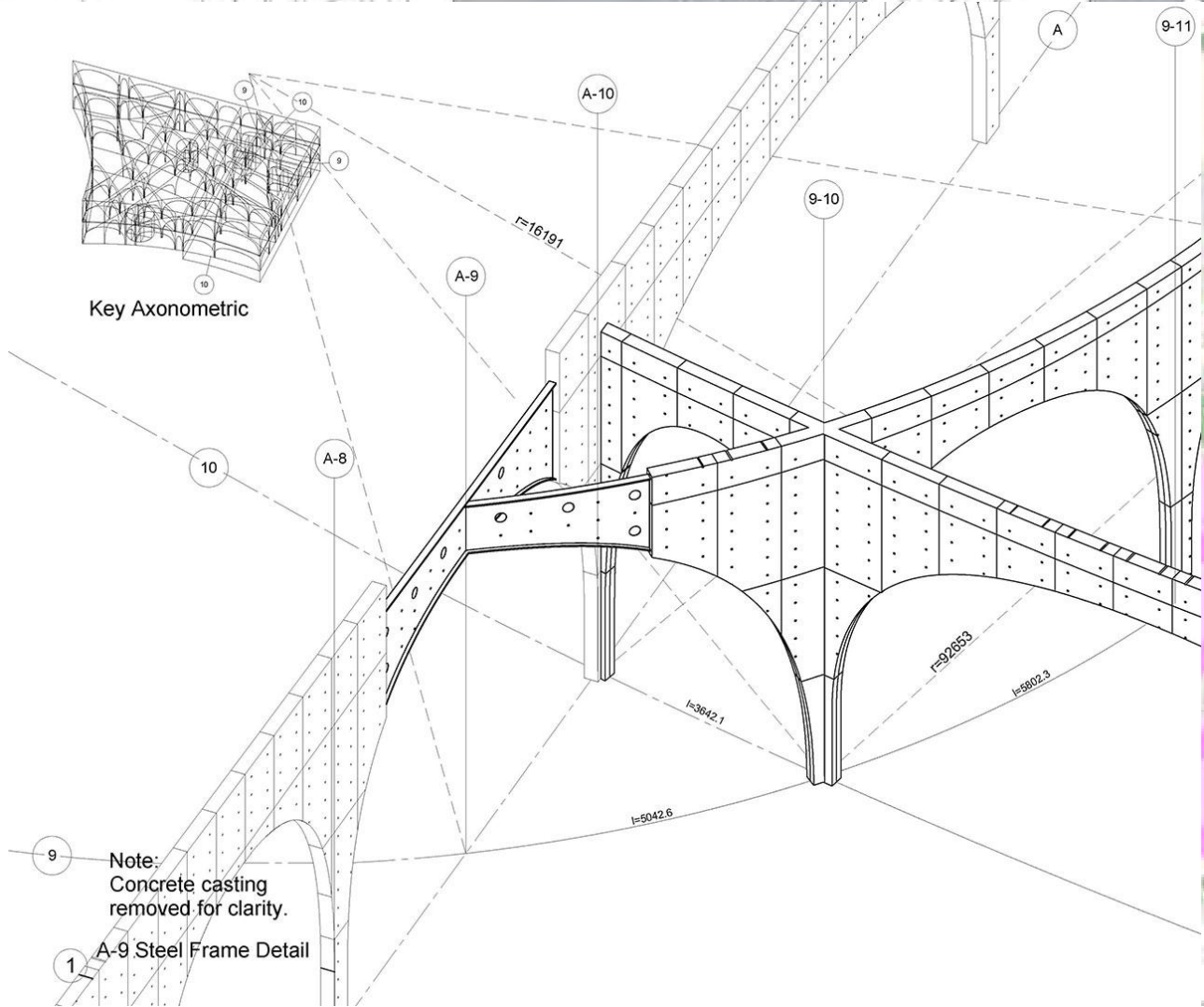
East elevation



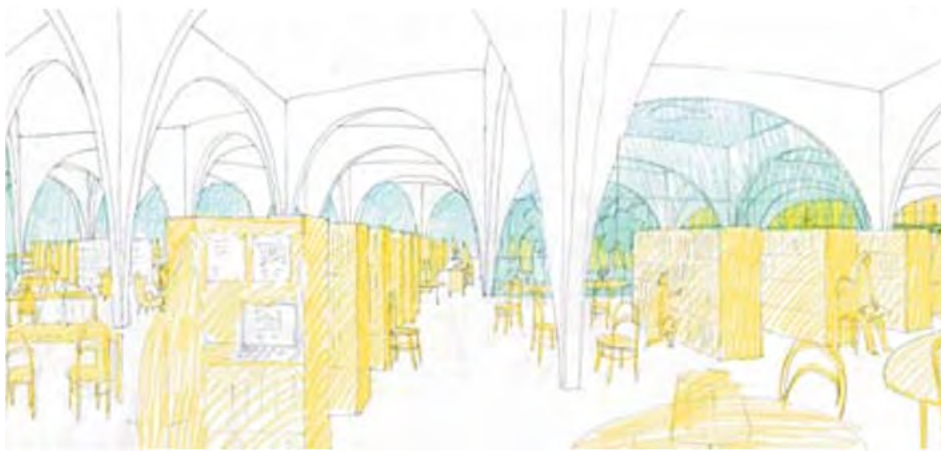
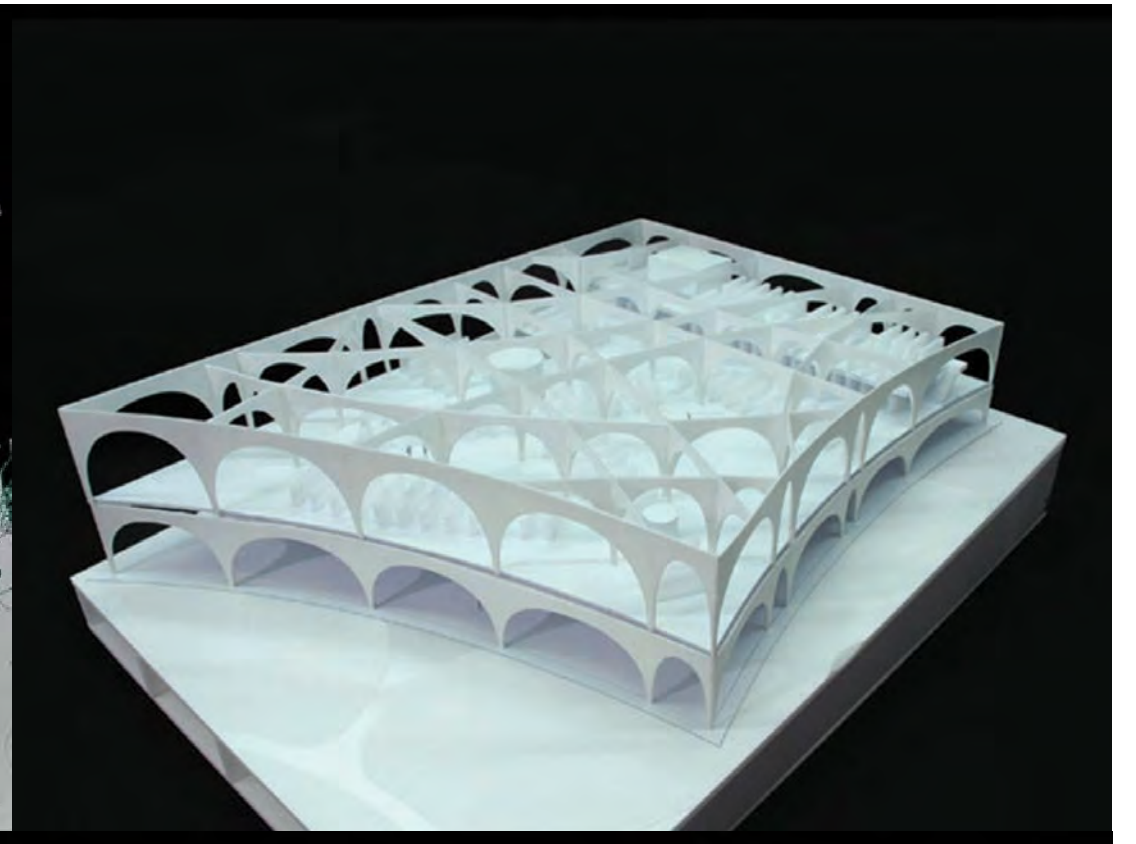
- Roof Slab
RC Void Slab
t=250-450
- 2F Arch
Steel + Concrete Frame
t=200
- 2F Slab
RC Void Slab
t=250-450
- 1F Arch
Steel + Concrete Frame
t=200
- 1F Slab (Partly B1F)
RC Slab
t=180-200



中央部に鉄板でアーチをつくり、その両サイドにコンクリートを打って、厚さ20cmのスレンダーな架構を実現させた。地下に免震構造を採用している
 The arches in the center were made with iron plates and concrete. The structure is 20cm thick. It uses a seismic structure underground.







1. Cofee
2. Cofee kitchen
3. Arcade gallery
4. Laboratory
5. Checkout desk
6. Office
7. Temporary theater
8. Open stacks/reading
9. Reference desk
10. Copying
11. Cloof stack
12. Machine
13. Compact storage
14. New books/magazines/minimedia

